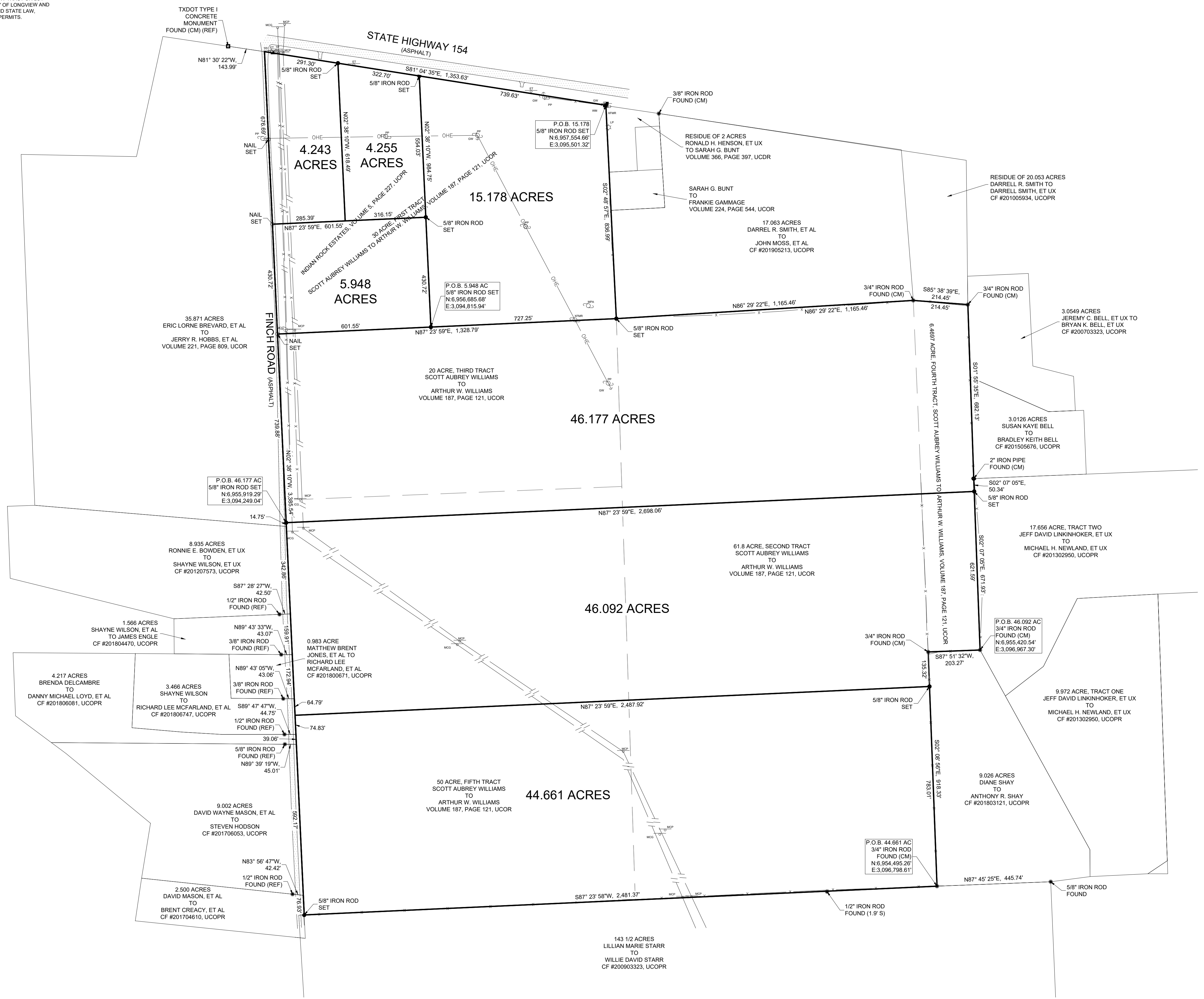


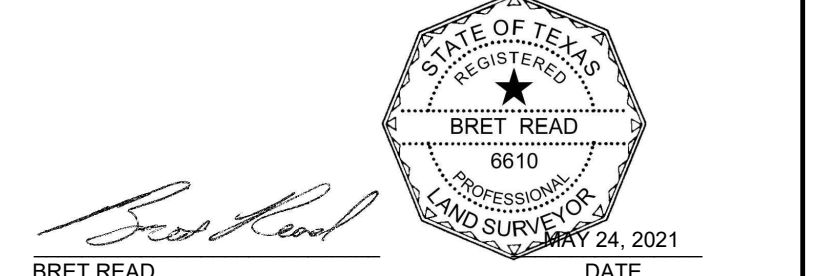
NOTES

1. BEARINGS ARE BASED UPON THE TEXAS COORDINATE SYSTEM OF 1983 (NAD83), NORTH CENTRAL ZONE.
2. DISTANCES SHOWN ARE GRID DISTANCES. TO CONVERT TO SURFACE DISTANCES DIVIDE GRID DISTANCES BY THE SCALE FACTOR: 0.9998808.
3. A CERTIFIED METES AND BOUNDS DESCRIPTION HAS BEEN PREPARED UNDER THE SAME JOB NUMBER AS A PART OF THIS PROFESSIONAL SERVICE.
4. THIS PROFESSIONAL SERVICE WAS PERFORMED WITHOUT BENEFIT OF HAVING BEEN FURNISHED A TITLE COMMITMENT, EASEMENTS AND/OR OTHER MATTERS AND/OR ISSUES RELATING TO TITLE COULD AND MAY EXIST.
5. ACCORDING TO TEXAS LOCAL GOVERNMENT CODE, CHAPTER 212.004 AND 212.005, DIVIDING ANY TRACT OR LOT INTO TWO OR MORE PARTS WITHOUT BENEFIT OF A SUBDIVISION PLAN APPROVED BY THE CITY OF LONGVIEW AND ALSO FILED AND RECORDED WITH THE COUNTY CLERK IS A VIOLATION OF CITY ORDINANCE AND STATE LAW, SUBJECTING THE VIOLATOR TO FINES AND/OR THE WITHHOLDING OF UTILITIES AND BUILDING PERMITS.

LEGEND	
	POWER POLE
	POWER POLE W/ TRANSFORMER
	METER POLE (ABANDONED)
	LIGHT POLE
	GUY WIRE
	WATER METER
	STREET SIGN
	ETC FIBER OPTICS SIGN
	MIDCOAST PIPELINE SIGN
	MIDCOAST GAS PIPELINE SIGN
	CONTROLLING MONUMENT
	BARBWIRE FENCE
	OVERHEAD ELECTRIC
	EXISTING PIPELINE



SURVEYORS CERTIFICATION
 I HEREBY CERTIFY THIS PLAT AS A REPRESENTATION OF A SURVEY MADE ON THE GROUND UNDER MY SUPERVISION, THAT IT REFLECTS THE FACTS AS FOUND AT THE TIME OF SAID SURVEY, AND THAT IT SUBSTANTIALLY CONFORMS TO THE CURRENT GENERAL RULES OF PROCEDURES AND PRACTICES, ESTABLISHED BY THE BOARD OF PROFESSIONAL LAND SURVEYING, AS AUTHORIZED BY THE PROFESSIONAL LAND SURVEYING PRACTICES ACT, (ART. 5282C, V.T.C.S.)



BRET READ
 PROFESSIONAL LAND SURVEYOR
 TEXAS REGISTRATION NO. 6610
 DATE MAY 24, 2021

PLAT OF SURVEY OF
 4.243 ACRES, 4.255 ACRES, 5.948 ACRES, 15.178 ACRES
 44.661 ACRES, 46.092 ACRES AND 46.177 ACRES
 IN THE ELIZA J. MCLENDON SURVEY, A-333
 UPSHUR COUNTY, TEXAS

36 SURVEYING
 310 H.G. MOSELEY PKWY., LONGVIEW, TEXAS 75604
 (903) 387-2577 WWW.36SURV.COM
 TPLS 10194293
 MAY 31, 2021 DRAWN BY: MTW CHECKED BY: JBR JOB #1118-330